



CU4 4 door controller



Overview

Omnixk Web Based Access Control System adopting the latest web design technique to develop and is embedded with web-server engine.

The controller is easy-to-install and its build in browser interface is simple to use so that user do not required specialize training. It is ideal application for small to large sized commercial buildings.

The intuitive browser based software can perform all access control functions and view the activities. It can also via the monitor panel direct command the door operation.

Administrator access into the system setting is guided through functional menus, and each menu complete with all functional items like Door Control Unit, User Management, Access Levels, Weekly Schedules, Define Holidays, Access Group, etc.

A card read function is build-in to simplify the card nos entry and speed up the card issue process.

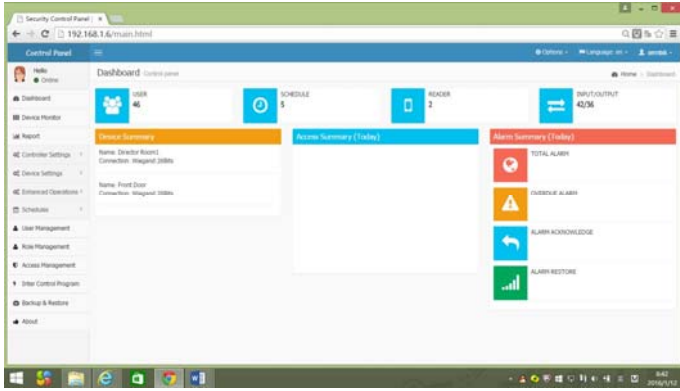
C2 can easily expanded into C4 by stacking another 2-door module, or it can expanded into C2i for 2 door integrated IO with 14 Input/16 Output functions.

C2 can also connect with EXP-IO panel for more IO points where it can use for alarm monitoring, or elevator floor output to liftcar control unit.

Feature

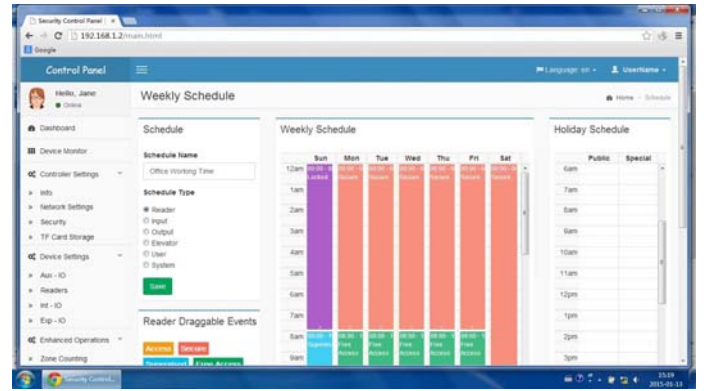
- User-friendly graphical UI with navigation menu.
- 2 door base controller.
- Stacking module S01 to be a C4 (4-door controller).
- Stacking module S02 to be a c2i (2 door integrated IO controller).
- Expandable (via RS485 connection to any controller) to 5 EXP-IO panel to create upto 140 supervised inputs and 120 relay outputs.
- Supports 100,000 users each with 2 cards
- Supports 100,000 events (expandable)
- Support 2000 schedule dedicated to reader, user and device operations.
- Support 6 time intervals per day schedule.
- Support FTP download and upload.
- Support 1000 door access groups & lift access groups
- Support 16 Security Access Level.
- Support zone counting, antipassback, interlocking.
- Enhancing security with build-in SAM slot
- Suitable multi-languages: English, Chinese, and more etc.
- Support industry standard wiegand reader, RDM reader, Omnixk reader, ISC CPU reader, etc.
- Support OSDP protocol
- Support HTTP protocol with AES256 encryption or hard-SAM encryption option
- SDK available for system integration.

Some UI Functions



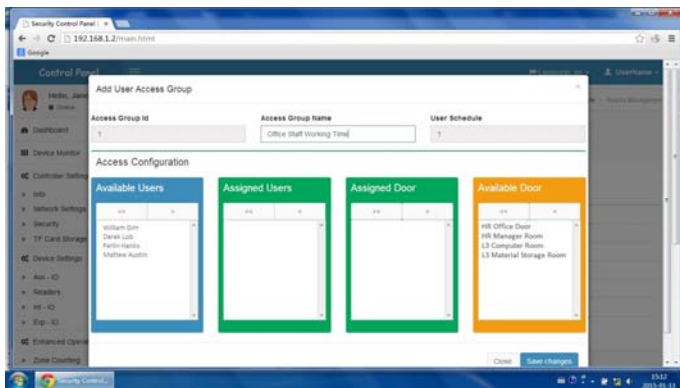
Dashboard:

It provides one glance view to the controller setting and its status.



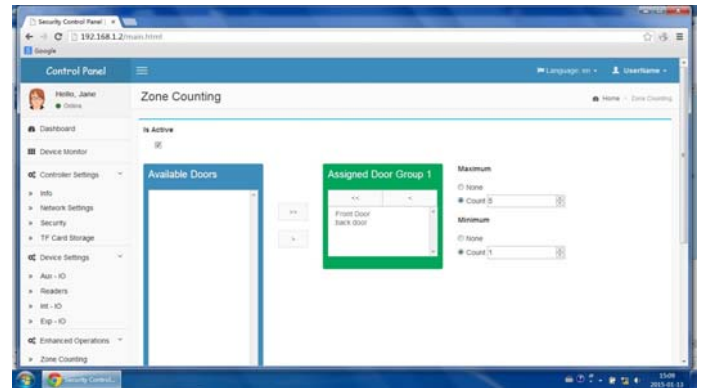
Weekly Schedule:

For setting of weekly schedule, configurable for different device types, for user and for system.



User Access Group:

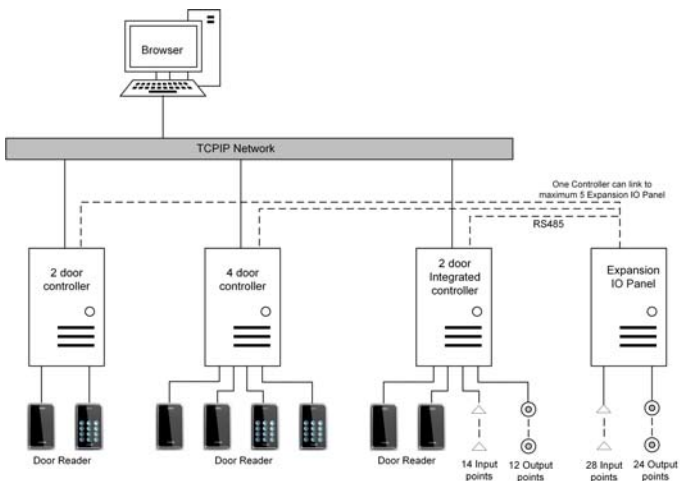
An easy way to assign User access rights, just drag and drop the nos. of users to match the nos. of doors



Zone Counting:

An effective way to limit the nos. of users to a room or group of rooms.

Connection



www.securitycompany.be
info@securitycompany.be

Specification

	C2	C4	C2i	EXP-IO
Function	2 door	4 door	2 door integrated	Expansion IO board
Operation	Via browser			-
Connection	TCP/IP, (RS485 optional)			RS485
Supported User & Events	100,000, 100,000			-
Access Level	16			-
Antipassback	Supported			-
Interlocking	Supported			-
Zone Counting	Supported			-
Inter-Control Program	Supported			-
Support Reader Type	Wiegand, RS485, TCP/IP			-
Reader nos.	2	4	2	-
Door Input points	8	8	8	-
Door Output points	2	4	2	-
Aux Input(supervised)	4	4	4	-
Aux Out	1	1	1	-
Device Input points	-	-	14	28
Device Output points	-	-	12	24
Security / Encryption	SAM, AES256			-
Enhancement	SD card, USB port, RS485 port			-
Power	AC90v ~ 230v			-